

## **CampCard**

Camp Card is the recreational payment and access system.

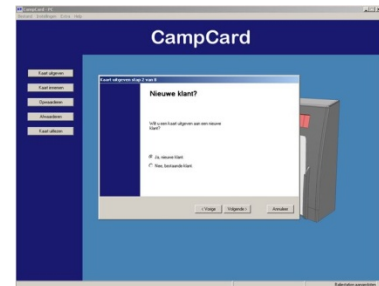
The cards in the system are contactless Mifare cards. This technique developed by Philips is currently the world standard in contactless cards. Mifare cards are used for example by the Dutch transport system and are used in many company restaurants.

### **Advantages of the CampCard**

Many existing card systems have a barcode, magnetic strip or a chip. These techniques are sensitive to sunlight, sand or moisture. Camp Card does not have these disadvantages as it is a contactless card.

The advantages of the CampCard are:

- Durability
- Minimal transaction time
- Greater reliability
- Long life
- Lower (maintenance) costs.



### **Cards**

The Mifare cards are made from white plastic (PVC) and can be printed with your own company logo. Please contact us for more details.

### **CampCard PC Software**

Camp Card system is managed by using PC software. As each function uses a number of steps (wizard), the software is user friendly and the risk of mistakes is minimal.

#### **Software features**

- Card issue
- Card return
- Top-up of cards
- Redeeming the balance
- Access settings

### **Desk station**

The Desk Station is connected to the USB point on a PC where transactions are carried out.

### **Desk Dispenser**

A Desk Dispenser for holding cards is an optional extra, available with space for approx. 300 cards.



### **Top-up**

Topping up the CampCard can always be done at the desk station. In addition, there is both a coin and cash machine available.

### **Total solution**

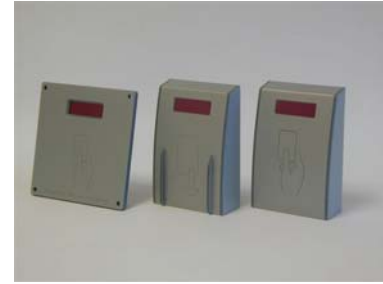
The latest upgrade for the CampCard is through a central server.

This makes it possible to have multiple workstations using 1 database. The server can also carry out the access settings for you. A link to the Tibos booking system is already available, links to other reservation software are also possible.

### **CampCard automatic card reader**

The CampCard card reader is a very useful top up system. A lot of thought has gone into the design of this and it can be used in many different situations such as:

- Showers
- Water points
- Washing machines/ Driers
- Waste compactors



This is also available as an internal or external unit and there is even a vandal resistant version available.

### **CampCard automatic card reader settings**

You are able determine in which mode the reader will work. The following settings are available:

- Payment per second
- Set amount – per pulse
- Set amount – for a certain time
- Balance information

The administrator can choose any tariff rate group. Using the administrator card, rates can be changed simply and independently.



### **CampCard Access Control**

The CampCard access control consists of 1 or more access points to the grounds. This access point is in a column on the roadside. The users of this system must hold their card in front of the reader, the system will decide if access has been authorized and then operate the gate accordingly.

The basic functions are:

- Entrance time settings
- Anti-pass back on/off
- Return time limit in minutes
- Entrance loop detectors

